



Automation Automotive Industry Assembly Line For TMS Integrated Module

Our Product Introduction

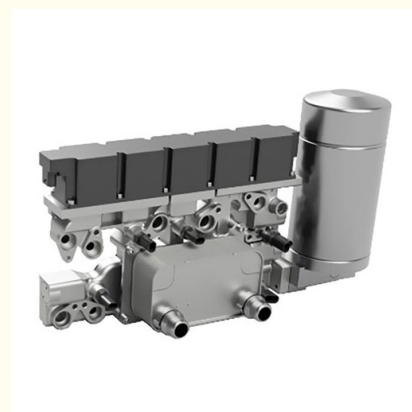
Basic Information

- Place of Origin: Shanghai
- Brand Name: Quanstar
- Certification: ISO
- Packaging Details: wooden box
- Payment Terms: L/C,T/T



Product Specification

- Name: Thermal Management Integration Module
- Application: Cooling Seat Water Circuit
- Condition: New
- Type: Semi-automatic
- Control System: PLC
- Power Supply: 380V/220V
- Highlight:
 - TMS Module Automotive Industry Assembly Line
 - , TMS Integrated Module Automotive Assembly Line
 - , TMS Integrated Module Automation Assembly Line



for more products please visit us on automation-assembly.com

Product Description

Integrated module for thermal management system (TMS) assembly automation

Features:

Complex control mode: For example, the TMS of Huawei electric vehicle has multiple heating and cooling modes. Through precise control of components such as the five-way valve, thermal regulation of each component is achieved.

Electronic control: The adoption of electronic control technology can control the heat management process more precisely, improving the response speed and control accuracy of the system.

Advantages:

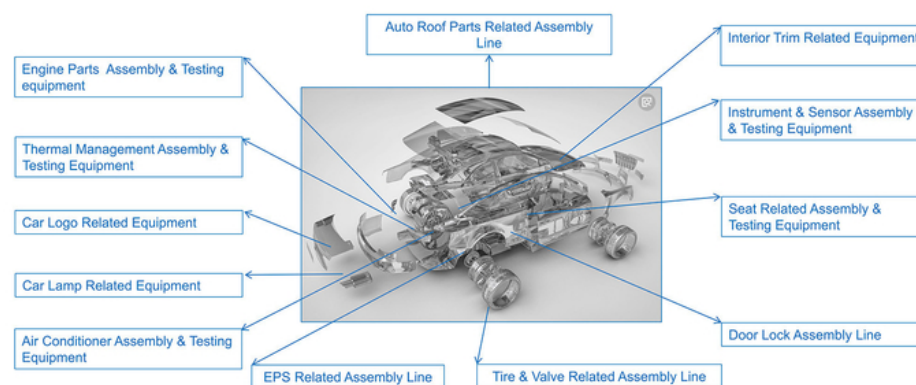
Reduce costs: The integrated assembly method may reduce the number of components and complex connection pipelines, reducing production and maintenance costs to a certain extent.

Adapt to different working conditions: Multiple control modes can flexibly adjust the heat management strategy according to different working conditions such as environmental temperature and driving requirements to ensure that the vehicle can have good performance in various situations.

Enhance reliability: Through the overall management and optimized control of each component, the probability of system failure is reduced and the reliability of the heat management system is improved.

Function	automatic feeding, assembly, testing & packaging
Production	integrated module for EV thermal management system
Defective rate	below 0.5%
Processes	laser marking
	visual detection
	automatic tightening
	EOL test
	labelling
Features	automated MES system, real time monitoring status
	whole line A level traceability

Automotive Industry & Related Auto Parts



We are committed to providing customers with high-quality, competitive products and services. A project cooperation process usually includes the following key steps.



FAQ

1.Q: Are you trading company or manufacturer?

A: We are a manufacturer with over 10 years of production and development experience.

2.Q: What are your major products?

A: We are an assembly automation solution provider specialized in customized automatic machinery for production. For example, we provide customized assembly line, testing and packaging solutions to several electric vehicle (EV) manufacturers, such as component-level lines for battery packs, thermal management systems, steerings and so on.

3. Q: How long is your delivery time?

A: Usually 3 months is a production cycle, the specific delivery date should be arranged according to the product's complexity and real-time production schedule. Please contact us for the latest delivery date.

4.Q: How about your price?

A: Show us your parts and we will be glad to find solutions and provide a suitable scheme, and offer the most competitive price to you.

5.Q: What is your terms of payment ?

A: 40% deposit and 60% balance payment before delivery.

6.Q: What is the package for you machine?

A: We have standard wooden case package.

7.Q: How long is the warranty?

A: Our aftersale service is one year free warranty, and life-time maintenance guaranteed.

8.Q:What partners do you work with?

A: We can both work with customer's designated partners and propose other components partners at customer's request. Some of our technical partners as below:

□



Quanstar Intelligent Controls (Shanghai) Co.,Ltd



+86 15002179039



sales@automation-assembly.com



automation-assembly.com

No.368 Xiaonan Road, Fengxian District, Shanghai 201401, China